

Note: Some designs in this collection may have been created using unique special stitches and/or techniques. To preserve design integrity when rescaling or rotating designs in your software, always rescale or rotate designs using the handles directly on-screen.



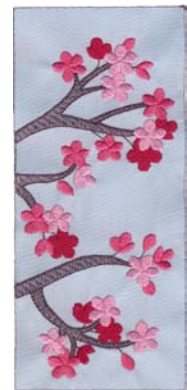
12404-01 Cherry Blossom Wall Art 1
3.02 X 6.89 in.
76.71 X 175.01 mm
7,162 St. ⌘ L



12404-02 Cherry Blossom Wall Art 2
3.02 X 6.89 in.
76.71 X 175.01 mm
5,111 St. ⌘ L



12404-03 Cherry Blossom Wall Art 3
3.02 X 6.89 in.
76.71 X 175.01 mm
6,379 St. ⌘ L



12404-04 Cherry Blossom Wall Art 4
3.02 X 6.89 in.
76.71 X 175.01 mm
12,262 St. ⌘ L



12404-05 Cherry Blossom Accent 1
4.47 X 5.17 in.
113.54 X 131.32 mm
8,099 St. ⌘ L



12404-06 Cherry Blossom Accent 2
3.40 X 2.82 in.
86.36 X 71.63 mm
4,048 St. ⌘



12404-07 Cherry Blossom Accent 3
2.32 X 2.54 in.
58.93 X 64.52 mm
2,660 St. ⌘



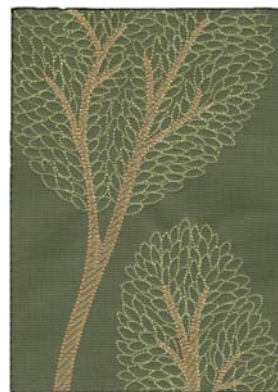
12404-08 Cherry Blossom Accent 4
1.04 X 1.22 in.
26.42 X 30.99 mm
1,486 St. S



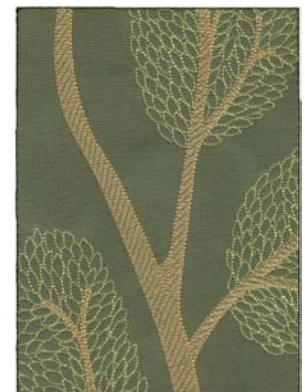
12404-09 Cherry Blossom Accent 5
.58 X .55 in.
14.73 X 13.97 mm
381 St. S



12404-10 Cherry Blossom Jumbo
6.75 X 13.67 in.
171.45 X 347.22 mm
30,146 St. ⌘ L



12404-11 Modern Tree Wall Art 1
4.89 X 6.89 in.
124.21 X 175.01 mm
18,002 St. ⌘ L

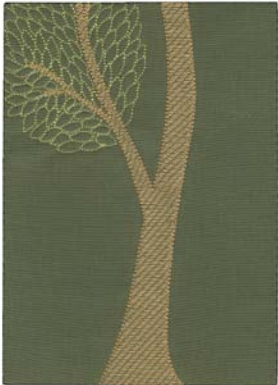


12404-12 Modern Tree Wall Art 2
4.88 X 6.88 in.
123.95 X 174.75 mm
14,886 St. ⌘ L

⌘ Design contains a loose fill.
⚙ Some white areas shown are not stitched.

L Design is larger than 5" (127 mm) in either direction.
S Design is smaller than 1.5" (38.1 mm) in either direction.

Note: Some designs in this collection may have been created using unique special stitches and/or techniques. To preserve design integrity when rescaling or rotating designs in your software, always rescale or rotate designs using the handles directly on-screen.



12404-13 Modern Tree Wall Art 3
4.88 X 6.88 in.
123.95 X 174.75 mm
8,079 St. **⌘ L**



12404-14 Modern Tree Accent 1
1.44 X 2.18 in.
36.58 X 55.37 mm
2,391 St. **⌘ S**



12404-15 Modern Tree Accent 2
1.44 X .95 in.
36.58 X 24.13 mm
1,075 St. **⌘ S**



12404-16 Modern Tree Jumbo
4.87 X 14.42 in.
123.70 X 366.27 mm
34,176 St. **⌘ L**



12404-17 Maple Wall Art 1
4.88 X 6.88 in.
123.95 X 174.75 mm
16,815 St. **⌘ L**



12404-18 Maple Wall Art 2
4.88 X 6.88 in.
123.95 X 174.75 mm
15,479 St. **⌘ L**



12404-19 Maple Wall Art 3
4.89 X 6.88 in.
124.21 X 174.75 mm
13,149 St. **⌘ L**



12404-20 Maple Accent 1
6.36 X 5.65 in.
161.54 X 143.51 mm
12,999 St. **⌘ L**



12404-21 Maple Accent 2
4.15 X 5.16 in.
105.41 X 131.06 mm
7,021 St. **⌘ L**



12404-22 Maple Accent 3
3.15 X 4.43 in.
80.01 X 112.52 mm
6,304 St. **⌘**



12404-23 Maple Accent 4
2.91 X 2.97 in.
73.91 X 75.44 mm
5,023 St. **⌘**



12404-24 Maple Accent 5
3.39 X 2.50 in.
86.11 X 63.50 mm
3,153 St. **⌘**

⌘ Design contains a loose fill.
⊗ Some white areas shown are not stitched.

L Design is larger than 5" (127 mm) in either direction.
S Design is smaller than 1.5" (38.1 mm) in either direction.

Note: Some designs in this collection may have been created using unique special stitches and/or techniques. To preserve design integrity when rescaling or rotating designs in your software, always rescale or rotate designs using the handles directly on-screen.



12404-25 Maple Accent 6
1.37 X 1.33 in.
34.80 X 33.78 mm
1,315 St. **S**



12404-26 Maple Jumbo
5.97 X 14.21 in.
151.64 X 360.93 mm
38,429 St. **⌘ L**



12404-27 Swirl Tree Wall Art 1
4.87 X 4.90 in.
123.70 X 124.46 mm
6,545 St. **⌘**



12404-28 Swirl Tree Wall Art 2
4.87 X 4.90 in.
123.70 X 124.46 mm
9,179 St. **⌘**



12404-29 Swirl Tree Wall Art 3
4.87 X 4.90 in.
123.70 X 124.46 mm
5,861 St. **⌘**



12404-30 Swirl Tree Accent 1
.83 X .81 in.
21.08 X 20.57 mm
682 St. **S**



12404-31 Swirl Tree Accent 2
.87 X .92 in.
22.10 X 23.37 mm
775 St. **S**



12404-32 Swirl Tree Accent 3
3.03 X 2.41 in.
76.96 X 61.21 mm
2,708 St. **⌘**



12404-33 Swirl Tree Accent 4
1.88 X 1.79 in.
47.75 X 45.47 mm
1,691 St. **⌘**



12404-34 Swirl Tree Jumbo
4.64 X 14.59 in.
117.86 X 370.59 mm
18,106 St. **⌘ L**

⌘ Design contains a loose fill.
⚙ Some white areas shown are not stitched.

L Design is larger than 5" (127 mm) in either direction.
S Design is smaller than 1.5" (38.1 mm) in either direction.

Listings below indicate color sample, stitching order and suggested thread color number. Most numbers indicate Isacord thread. However, colors beginning with 20501 refer to YLI Fine Metallics, 7 refer to Yenmet Metallic, 8 refer to YLI Variations Variegated Thread and 9 refer to Isacord Multicolor Variegated.

12404-01 Cherry Blossom Wall Art 1

1. Branches	0132
2. Dark Pink Flowers	2521
3. Medium Pink Flowers	2520
4. Light Pink Flowers	2550
5. Basting Stitch	0132

12404-02 Cherry Blossom Wall Art 2

1. Branches	0132
2. Dark Pink Flowers	2521
3. Medium Pink Flowers	2520
4. Light Pink Flowers	2550
5. Basting Stitch	0132

12404-03 Cherry Blossom Wall Art 3

1. Branches	0132
2. Dark Pink Flowers	2521
3. Medium Pink Flowers	2520
4. Light Pink Flowers	2550
5. Basting Stitch	0132

12404-04 Cherry Blossom Wall Art 4

1. Branches	0132
2. Dark Pink Flowers	2521
3. Medium Pink Flowers	2520
4. Light Pink Flowers	2550
5. Basting Stitch	0132

12404-05 Cherry Blossom Accent 1

1. Branches	0132
2. Dark Pink Flowers	2521
3. Medium Pink Flowers	2520
4. Light Pink Flowers	2550

12404-06 Cherry Blossom Accent 2

1. Branches	0132
2. Dark Pink Flowers	2521
3. Medium Pink Flowers	2520
4. Light Pink Flowers	2550

12404-07 Cherry Blossom Accent 3

1. Branches	0132
2. Dark Pink Flowers	2521
3. Medium Pink Flowers	2520
4. Light Pink Flowers	2550

12404-08 Cherry Blossom Accent 4

1. Dark Pink Flowers	2521
2. Medium Pink Flowers	2520
3. Light Pink Flowers	2550

12404-09 Cherry Blossom Accent 5

1. Single Color Design	2550
------------------------	------

12404-10 Cherry Blossom Jumbo

1. Branches	0132
2. Dark Pink Flowers	2521
3. Medium Pink Flowers	2520
4. Light Pink Flowers	2550

12404-11 Modern Tree Wall Art 1

1. Branches	0851
2. Leaves	6141
3. Basting Stitch	0020

12404-12 Modern Tree Wall Art 2

1. Branches	0851
2. Leaves	6141
3. Basting Stitch	0020

12404-13 Modern Tree Wall Art 3

1. Branches	0851
2. Leaves	6141
3. Basting Stitch	0020

12404-14 Modern Tree Accent 1

1. Branch	0851
2. Leaves	6141

12404-15 Modern Tree Accent 2

1. Branch	0851
2. Leaves	6141

12404-16 Modern Tree Jumbo

1. Branches	0851
2. Leaves	6141

12404-17 Maple Wall Art 1

1. Branches	1154
2. Red Orange Leaves	1322
3. Red Leaves	1514
4. Orange Leaves	1102
5. Basting Stitch	0020

12404-18 Maple Wall Art 2

1. Branches	1154
2. Orange Leaves	1102
3. Red Leaves	1514
4. Red Orange Leaves	1322
5. Basting Stitch	0020

12404-19 Maple Wall Art 3

1. Branches	1154
2. Orange Leaves	1102
3. Red Orange Leaves	1322
4. Red Leaves	1514
5. Basting Stitch	0020

12404-20 Maple Accent 1

1. Branches	1154
2. Orange Leaves	1102
3. Red Orange Leaves	1322
4. Red Leaves	1514

12404-21 Maple Accent 2

1. Branches	1154
2. Orange Leaves	1102
3. Red Leaves	1514
4. Red Orange Leaves	1322

12404-22 Maple Accent 3

1. Branches	1154
2. Orange Leaf	1102
3. Red Leaves	1514
4. Red Orange Leaf	1322

12404-23 Maple Accent 4

1. Branches	1154
2. Orange Leaf	1102
3. Red Orange Leaf	1322
4. Red Leaf	1514

12404-24 Maple Accent 5

1. Branches	1154
2. Orange Leaf	1102
3. Red Leaf	1514

12404-25 Maple Accent 6

1. Single Color Design	1514
------------------------	------

12404-26 Maple Jumbo

1. Branches	1154
2. Orange Leaves	1102
3. Red Orange Leaves	1322
4. Red Leaves	1514
5. Orange Leaves	1102
6. Red Orange Leaves	1322

12404-27 Swirl Tree Wall Art 1

1. Branches	3732
2. Green Leaves	4620
3. Blue Leaves	3910
4. Bird 1904	
5. Basting Stitch	0020

12404-28 Swirl Tree Wall Art 2

1. Branches	3732
2. Green Leaf	4620
3. Blue Leaves	3910
4. Bird 1904	
5. Basting Stitch	0020

12404-29 Swirl Tree Wall Art 3

1. Branches	3732
2. Green Leaves	4620
3. Blue Leaves	3910
4. Basting Stitch	0020

12404-30 Swirl Tree Accent 1

1. Single Color Design	1904
------------------------	------

12404-31 Swirl Tree Accent 2

1. Single Color Design	1904
------------------------	------

12404-32 Swirl Tree Accent 3

1. Branches	3732
2. Green Leaf	4620
3. Blue Leaf	3910

12404-33 Swirl Tree Accent 4

1. Branches	3732
2. Green Leaf	4620
3. Blue Leaf	3900

12404-34 Swirl Tree Jumbo

1. Branches	3732
2. Green Leaves	4620
3. Blue Leaves	3910



SUPPLIES:

- Tear Away Stabilizer
- 10" by 20" artist canvas (1/2" thickness)
- 24" by 14" piece of hot pink linen or linen look fabric
- 4 pieces 10" by 16" light blue cotton fabric (or 4 pieces large enough for your embroidery hoop)
- Staple gun
- Craft knife and cutting mat
- Quilting Ruler
- Rotary cutter
- Temporary Spray Adhesive
- Hot Glue Gun or other permanent quick-dry glue
- Permanent glue tape (such as that used for scrapbooking)
- 1 piece of white foam core (this will be cut into 4 3" x 7" pieces)
- Beautiful Branches Embroidery Collection

INSTRUCTIONS:

Embroider the designs:

1. Hoop a piece of light blue fabric with two layers of tear away stabilizer. Embroider one of the four cherry blossom branch designs (12404-01, 12404-02, 12404-03, 12404-04).
2. Carefully remove the basting stitches from around the outside of the design. This is most easily done from the backside of the embroidery (see **Photo 1**)
3. Remove the stabilizer from the back of the design. Remove as much stabilizer as possible without distorting your stitches.
4. Press the embroidery from the back side.
5. Repeat steps 1-4 for all four embroidery designs.

Wrap the foam core pieces with the embroidered fabric:

1. Using a craft knife, cut your foam core into 4 3" by 7" pieces. (See **Photos 2 and 3**)
2. Spray one side of one piece of foam core with temporary adhesive spray.



Photo 1

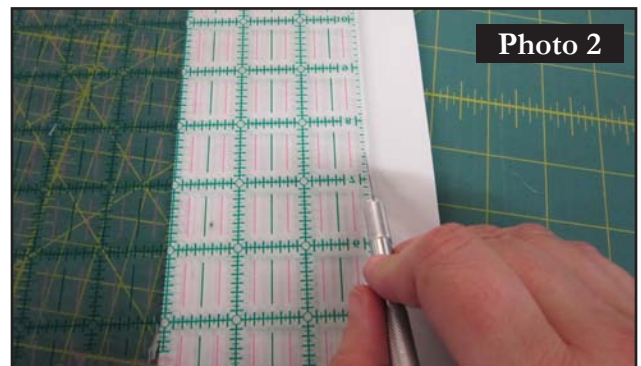


Photo 2

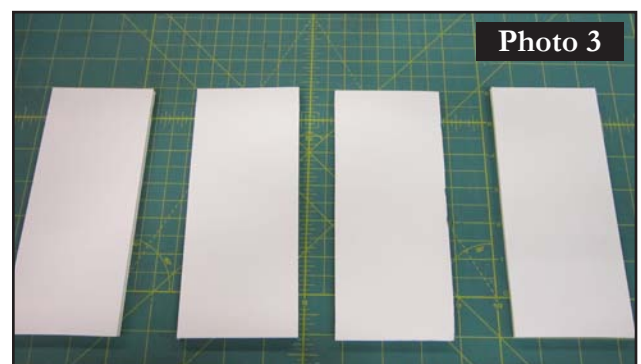


Photo 3

- Place one of your embroidered pieces onto the foam core. The design should be placed such that the needle holes from the basting stitches line up with the edges of the foam core piece. (See **Photos 4 and 5.**)
- Using a rotary cutter, trim the fabric around the foam core piece so that there is approximately 1" of fabric all the way around the outside of the foam core piece. (See **Photo 6**)
- Flip over the foam core piece. Use a tape runner to run down the length of the foam core on the backside. (See **Photo 7**) Wrap the fabric from the front of the foam core onto the back, adhering it to the tape runner strip. Repeat on the opposite long side.



Photo 4



Photo 5



Photo 6

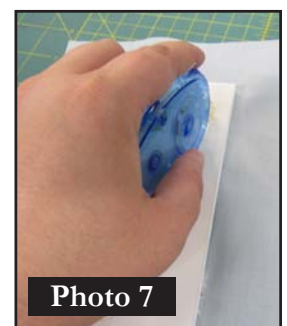


Photo 7

- Fold the corners of the remaining short side at a 45 degree angle on each side – like you would when gift-wrapping a package. (See **photo 8**) This will form a “flap” that you will fold to the backside. (See **photo 9**)
- Use the tape runner or other quick-dry adhesive to adhere this flap to the backside of the foam core. Repeat with the final side of the fabric.
- Repeat this wrapping process for all four designs.

Cover the canvas

- Fold the 14" by 24" piece of linen into fourths. Cut a 1 1/2" square from the unfolded corner. (See **photo 10**). This will cut the bulk out of the corners when you wrap the canvas.
- Wrap the canvas, using the staple gun to attach the fabric to the back of the canvas. Miter-fold the corners. (See **photos 11, 12, and 13 on next page**)

Attach the embroidery to the covered canvas

- Use a quilt ruler to align your embroidered foam core pieces. All of our designs should be approximately 1 1/2" from the long edges. The two outer-most designs should be placed 2" in from the shorter sides, and each piece should be about 1 1/4" apart. (See **photo 14 on next page**)
- If desired, mark the positions of these pieces lightly with chalk.
- Adhere each foam core piece to the canvas with hot glue or other fast-dry adhesive.
- Allow to dry completely before lifting your project from your work surface.



Photo 8



Photo 9



Photo 10



Photo 11



Photo 12



Photo 13



Photo 14

You can create similar projects using the following sets of designs. Simply choose a base canvas that is large enough to accommodate all of your designs with space in between each. Choose a fabric to wrap your canvas that coordinates with your design choices. See the cover of this pdf for the following combinations:

- Modern Tree Set: 12404-11, 12404-12, 12404-13
- Maple Set: 12404-17, 12404-18, 12404-19
- Swirl Tree Set: 12404-27, 12404-28, 12404-29